

Open

9:00 to 17:00 (Admission closes at 16:00.)

Closed

Temporarily closure for maintenance.

Ticket Prices			
Category	Individual	Group	
		20+ Persons	School Group
Adult or high school student	1,420yen	1,140yen	HS: 570yen
Jr. high or elementary student	710yen	570yen	JH:490yen Elem:350yen
Young child	400yen	320yen	280yen

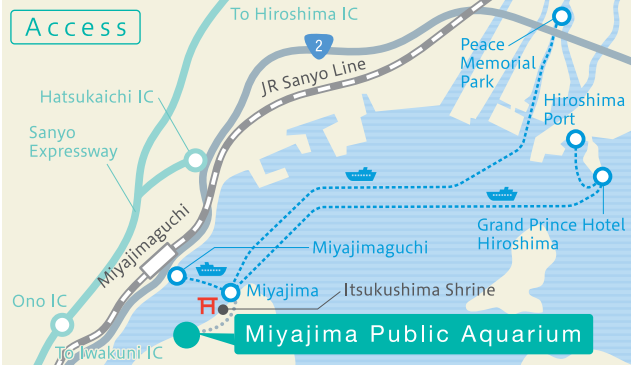
\*School Group: Applies when a group visits the aquarium as part of a school event, such as a school trip or excursion. School teachers or staff who lead such student groups will be exempted of charge. \*\*Young child\* price applies to children aged 4 and older who have not entered school yet. Children younger than 4 are admitted free.

**Exempted fee** .....  
※50% exempted rates are applied to the holders of the identification booklet for physically disabled, mental disability certificate, or Nursing Handbook for People with Disabilities. Their caretakers will be exempted of charge (up to 1 caretaker per booklet/certificate/handbook holder). ※50% exempted rates are applied to the residents or overwhelming service recipients of rehabilitation support institutions for physically disabled, support institutions for mentally disabled, mental hospitals or institutions that provide support facilities for children with disabilities. Their caretakers will be exempted of charge (up to 1 caretaker per resident/ambulating service recipient).

\* Not applicable to groups (20 people or more) or the price of an Annual Passport. Persons with a handbook entering the aquarium individually must show their handbook at the ticket gate. Groups must submit an admission fee reduction application by fax before coming to the aquarium. \* Please inquire for details. (Information: Miyajima Public Aquarium 0829-44-2010)

**Annual Passport** Miyajima Public Aquarium sells an Annual Passport that enables the buyer to visit the facility as often as he/she wishes for one year from the date of purchase. If you come more than three times in one year, the Passport will have more than paid for itself. You can purchase a Passport directly from ticket counter.

Adult or high school student	Jr. high or elementary student	Young child
3,560yen	1,730yen	1,010yen



**\*By car** Approximately 3 km from (Sanyo Expressway) Hatsukaichi IC or Ono IC to Miyajimaguchi.  
**\*Public transportation**  
■ JR Hiroshima Station→Miyajimaguchi Station (approx. 25 minutes by JR Sanyo Line, 68 minutes by Hiroden Main Line to Miyajima Line)  
● Miyajimaguchi→Miyajima Pier (ferry) (approx. 10 minutes by JR West Miyajima Ferry or Miyajima Matsudai Kisen Tourist Ship)  
● Hiroshima Port (via Grand Prince Hotel Hiroshima)→Miyajima Pier (ferry) (approx. 32 minutes by Setouchi Sea Line/passenger boat)  
● Peace Memorial Park (Motokasu Pier)→Miyajima Pier (ferry) (approx. 45 minutes by AQUA NET HIROSHIMA/passenger boat)  
● Miyajima Pier→Miyajima Public Aquarium (approx. 25-minute walk)  
\*Approx. 5-minute walk from Itsukushima Shrine exit, approx. 10 minutes by bus or taxi

みやじマリン

宮島水族館

10-3 Miyajima-cho, Hatsukaichi-shi,  
Hiroshima-ken, Japan 739-0534  
Phone: 0829-44-2010; Fax: 0829-44-0693

宮島水族館

Search

http://www.miyajima-aqua.jp

Information on animal handling business  
□Animal handling business registration number: No. 165002 □Name: Taro Matsumoto (Mayor of Hatsukaichi City)  
□Name of the business: Miyajima Public Aquarium □Location of the business: 10-3 Miyajima-cho, Hatsukaichi-shi  
□Type of animal handling business: Exhibition □Date of registration: May 18th, 2011 □Expiration date of registration: May 31st, 2021 □Name of person in charge of animal handling: Futoshi Akagi  
Date of Manufacture: November 2019

# Events held each day! Watch the animals' amazing skills!

Live Show Pool

Venue for live sea lion shows. From making cute gestures to putting on dynamic performances, sea lions provide marvelous entertainment.

Event



Friendship Square

Fun Time with the Penguins

Observe Humboldt penguins up close. Pet them and see what they feel like!

Finfoot Pool

Fun Time with Seal

Spotted seal are adorable when touching them. See and observe their body marks pattern.

Rooftop Area

Complete with lawn area, a nice place to enjoy refreshments or take a break during a field trip.

Picnic Area

This area is equipped with outdoor tables and benches. Great place to rest or eat a packed lunch or supper.

Miyajimarine

Kitchen

Here, you can buy a hamburger, other light foods, drinks, and sweets. This break area also provides a view of the Inland Sea.

宮島水族館

Museum Shop

While offering an array of products ranging from authentic-looking stuffed animals to stationery and snacks, this shop focuses on original goods that can't be purchased anywhere else. Top spot for aquarium souvenirs.

Miyajima Public Aquarium Information

Coin Lockers

Located in the entrance hall. 100 yen/use (coin is returned).

Free Stroller Rental

Loaner strollers are available for free for children 2 months and older.

Free Wheelchair Rental

Loaner wheelchairs are available for free for persons needing one.

Nursing Room

On first floor next to Information. Diaper changing table available, too. If hot water is needed, please inquire.

Service Dogs OK

Service dogs are allowed in the aquarium. However, pets are not.

Reentry OK

You'll be stamped with black light ink.

\*The first and second floors contain ostomate-adaptive restroom facilities and diaper changing tables for men and women. \*Please refrain from eating and drinking while viewing the exhibits. Please eat and drink in the designated areas only. \*Please refrain from using flash photography in the marked "No Flash" areas. \*Smoking is prohibited anywhere on Miyajima Aquarium grounds. \*Please do not bring dangerous materials or other items that will be a nuisance to other visitors.



Come meet over 350 species of water creatures!

# Leisurely explore the diverse, unique Seto Inland Sea!

The Seto Inland Sea, Japan's largest inland sea, contains over a thousand islands of various size. Its complex topography and large tidal variation have created a flourishing ecosystem. Enjoy underwater exploring and see what kind of living creatures live in this sea.



## 6 Whales of the Seto Inland Sea 1F 2F

Come see the Seto Inland Sea's only whale species: the finless porpoise! From the second floor you can watch them feeding, while from the first floor you can see how adorable they look as they effortlessly glide through the large tank. The Miyajima Public Aquarium has engaged in study, research, and breeding of the finless porpoise for a long time.

## 9 Setouchi Laboratory 1F

Here, animal keepers provide detailed explanations of the ecology of the creatures through demonstration.



## 10 Rocky Shore of Friendship (Touch pool) 1F

You can directly touch and watch rocky shore creatures here.



## Archerfish Tank 1F

Archerfish prey on insects and other small animals that live on branches and leaves by shooting them down with water from their mouths. You can watch demonstrations of their shooting ability here.

## Otter Pool 1F

Here, you can watch cute, comical Asian small-clawed otters in action up close.



## Penguin Pool 1F 2F

Here, you can observe the ecology of penguins. You'll enjoy watching them swim through water as if flying and be amused by their lovable waddle on land.



## 4 From Mountains to Sea 2F

This exhibit re-creates the Hiroshima Prefecture landscape from upper river basin to the SATOYAMA. Water flows down from the mountains and into the sea, creating the bountiful Seto Inland Sea.



## Sea Lion Pool 1F 2F

At this popular attraction, you can see a dynamic display of Steller sea lions in action as they swim, dive, and splash in the water.



## Finfoot Pool Outdoor

Here, you can observe the daily routines of sea lions and seals in the water and on land.



## 5 Sea of Healing 1F 2F

This is Miyajima Public Aquarium's largest tank, where a great variety of large and small sea creatures effortlessly swim right in front of your eyes. See if you can find the ones that hide on the seafloor and in the shadows of rocks.

## 7 Mysteries of the Sea 1F

Largehead hairtail are on display throughout the year, which is rare in Japan. In addition to featuring Largehead hairtail, which swim standing up in dark seawater, this exhibit contains nocturnal, luminescent, and other interesting sea creatures.



## 8 Physical Appearances and Lifestyles of Creatures 1F

Living creatures of the sea have evolved over a long period of time and have diverse bodies and ways of living that have enabled them to survive. This exhibit sheds some light on the strangely wonderful modes of life of these creatures.



## 3 Blessings of the Sea 1F 2F

The "oyster raft" is a representative part of the coastal scenery of Hiroshima. This is the place where you can observe what an oyster raft looks like in the sea. Take a look from the perspective of the fish that swim around the oysters.



## 2 Mudflats in Miyajima 1F

Re-creates the mudflats found near Itsukushima Shrine's "floating" torii gate. Created by large tidal variations, the Mudflats in Miyajima is a precious nature inhabited by a variety of living creatures.

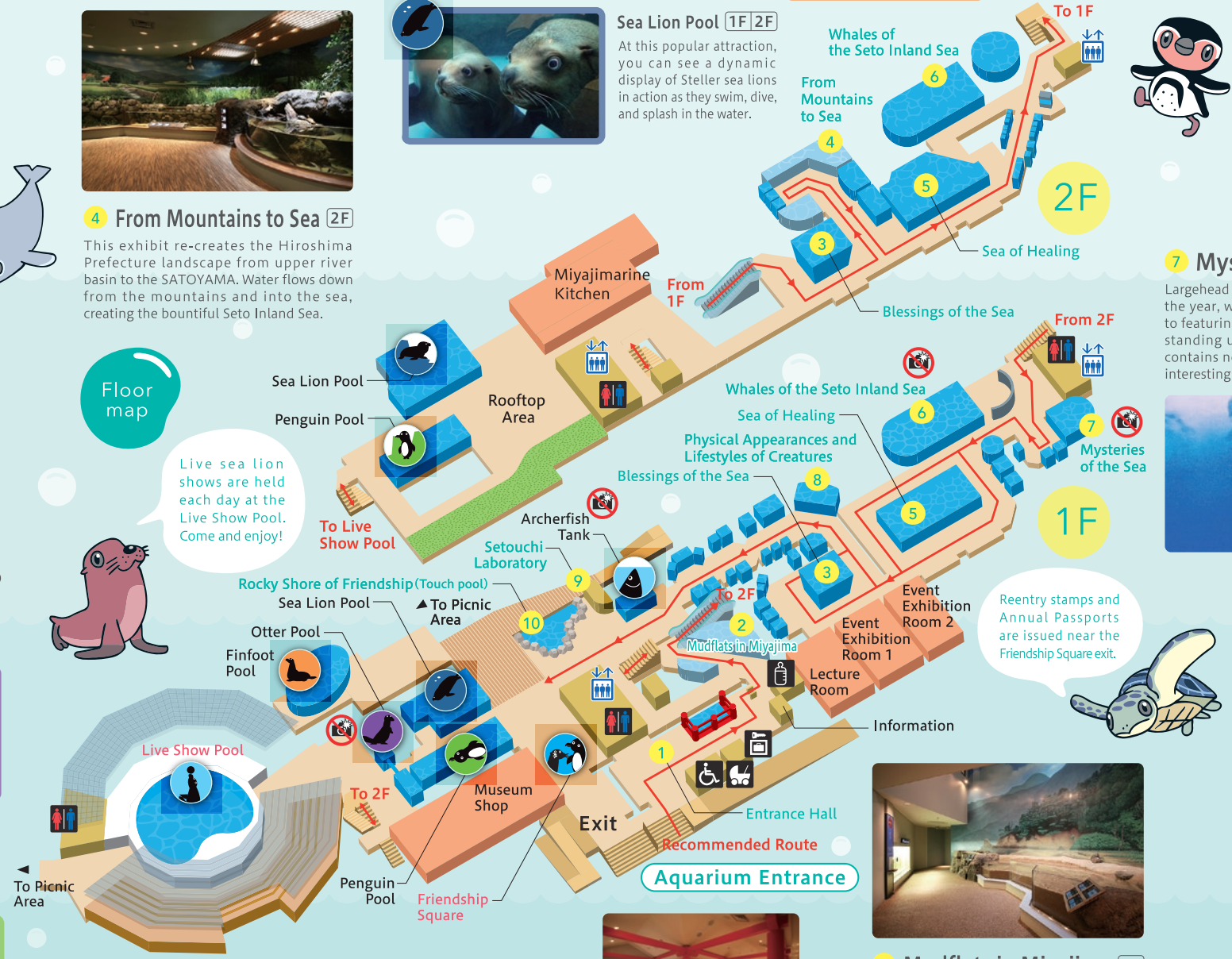


## 1 Entrance Hall 1F

Brings to mind the corridors of Itsukushima Shrine. Welcome to the beautiful Seto Inland Sea!



Floor map



Reentry stamps and Annual Passports are issued near the Friendship Square exit.